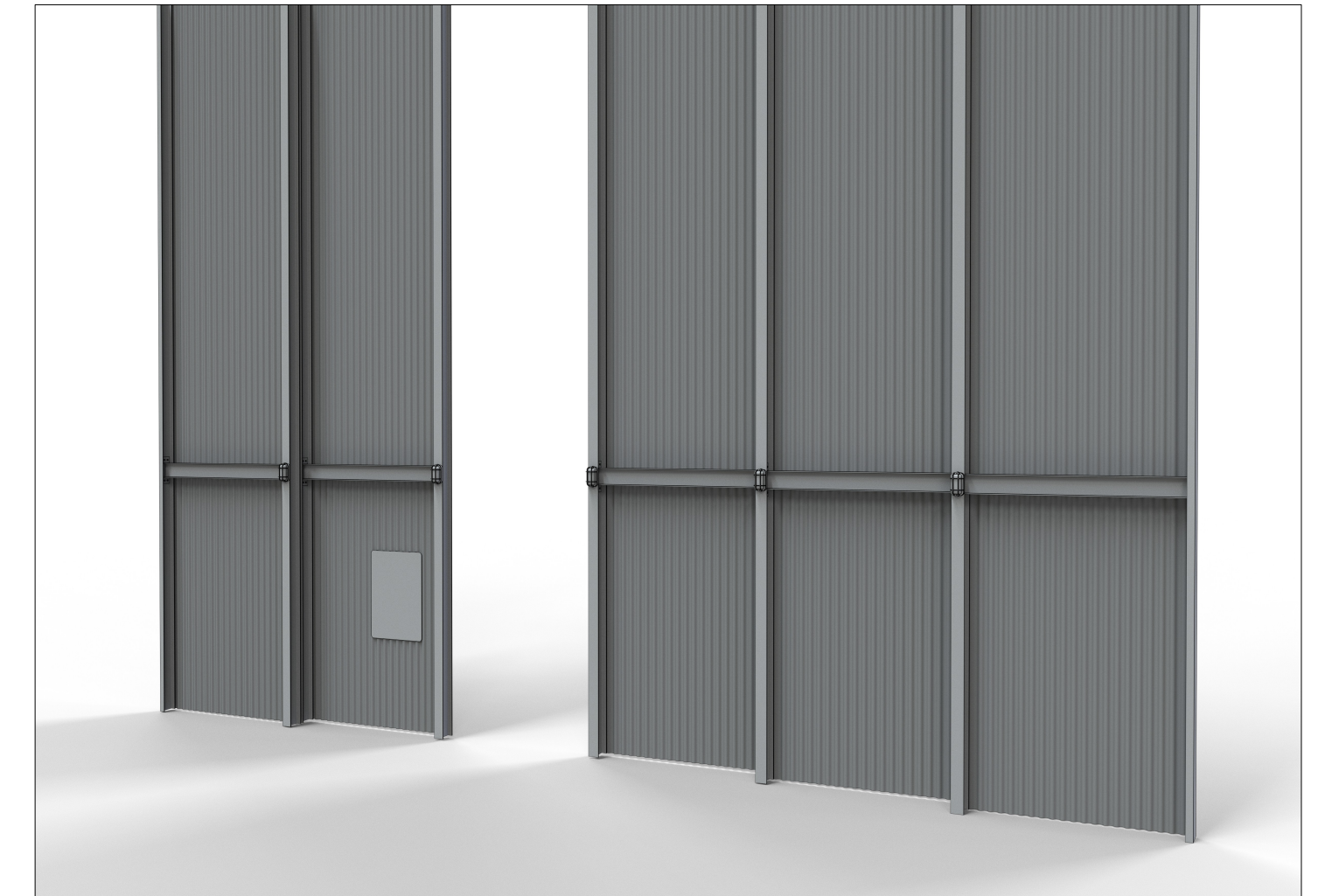
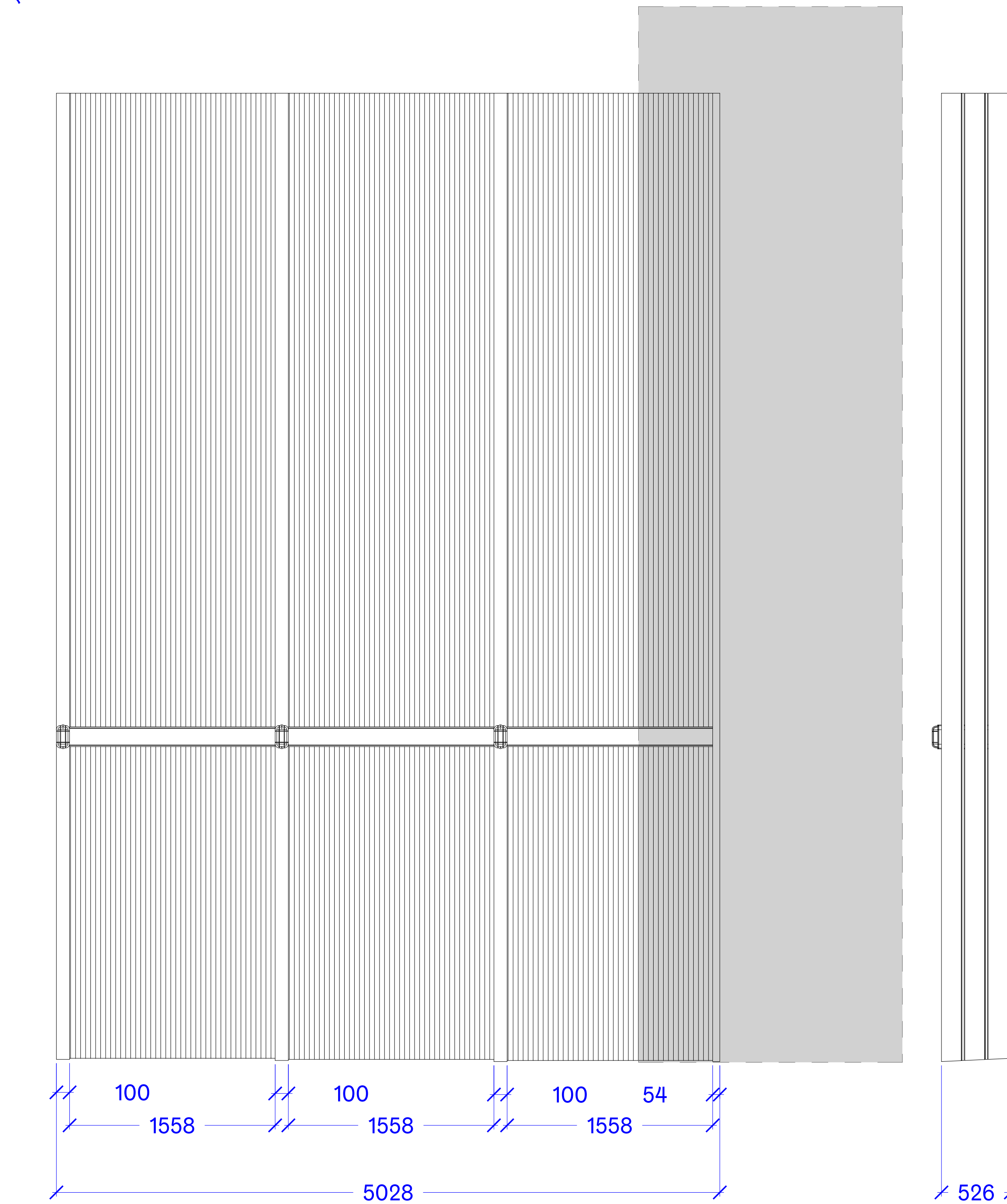
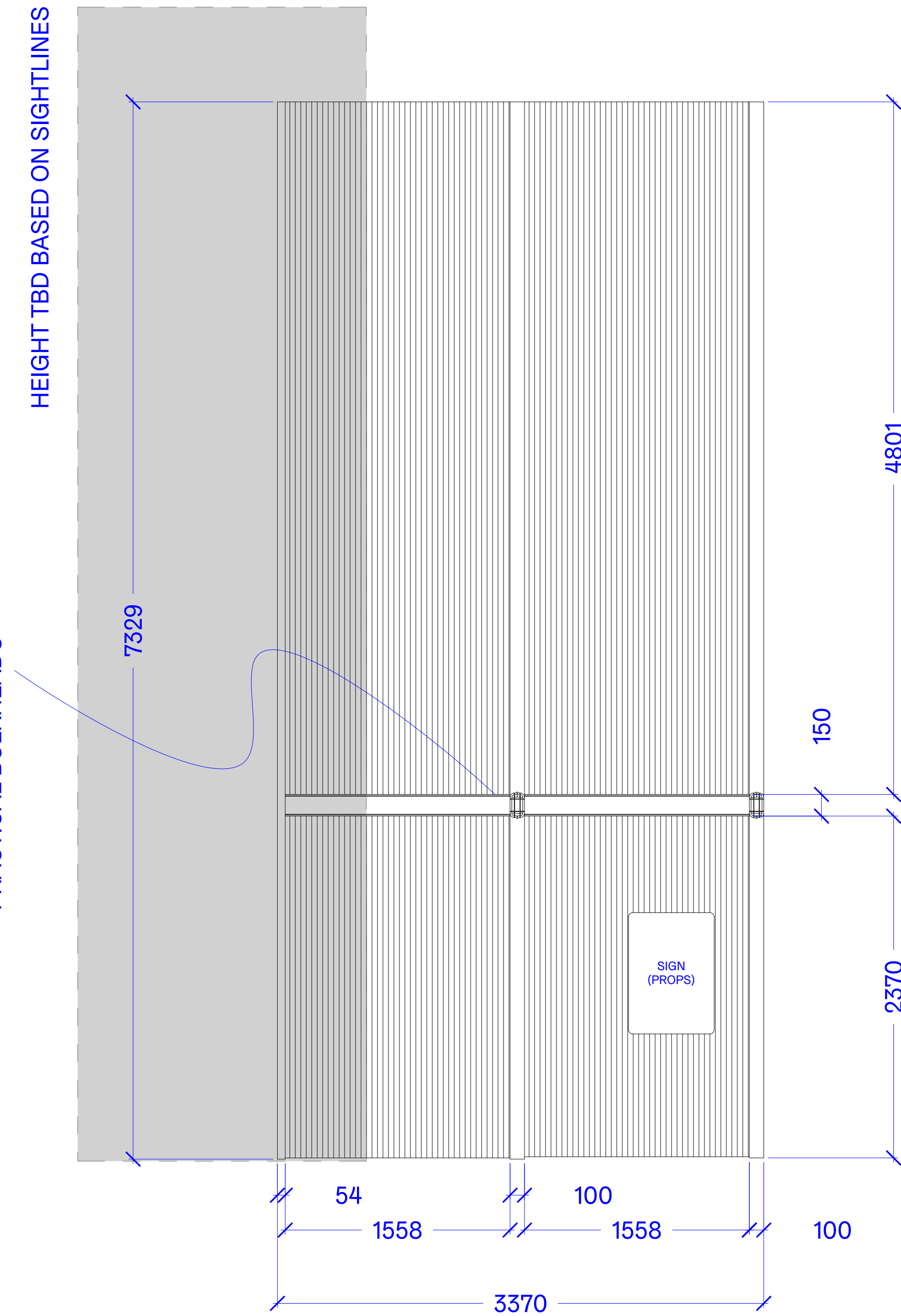
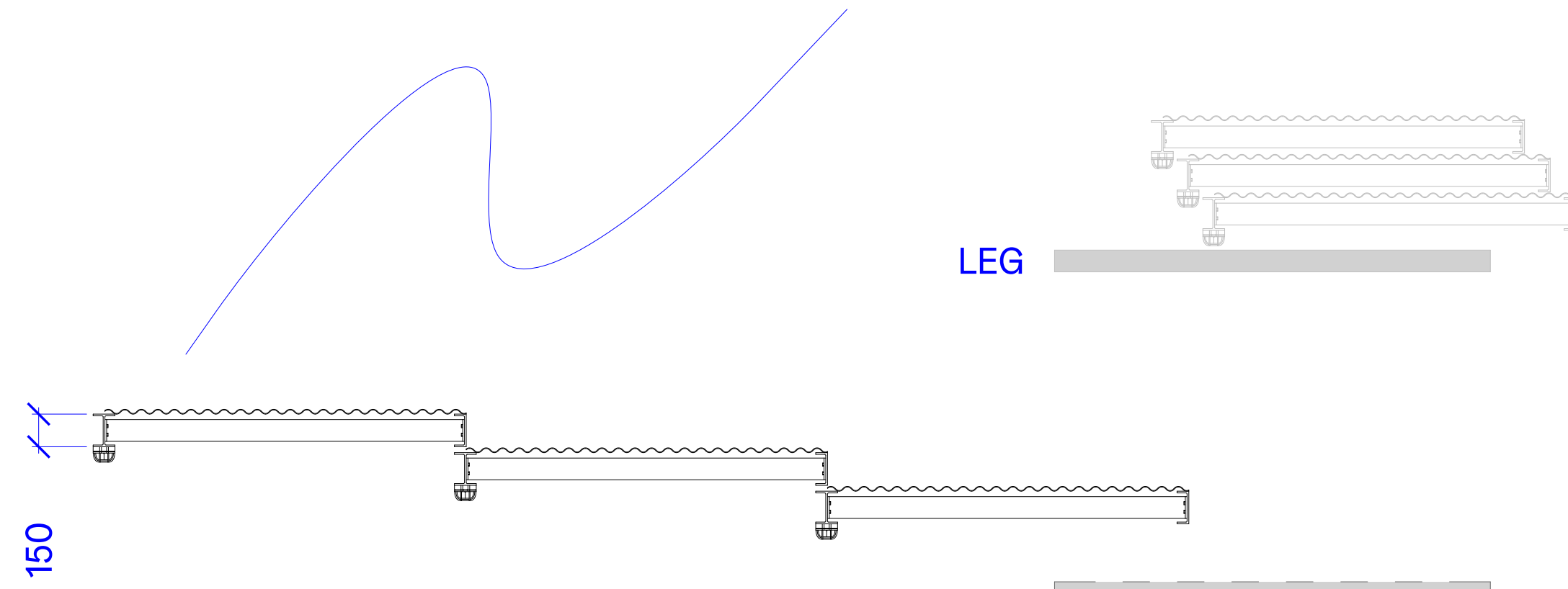
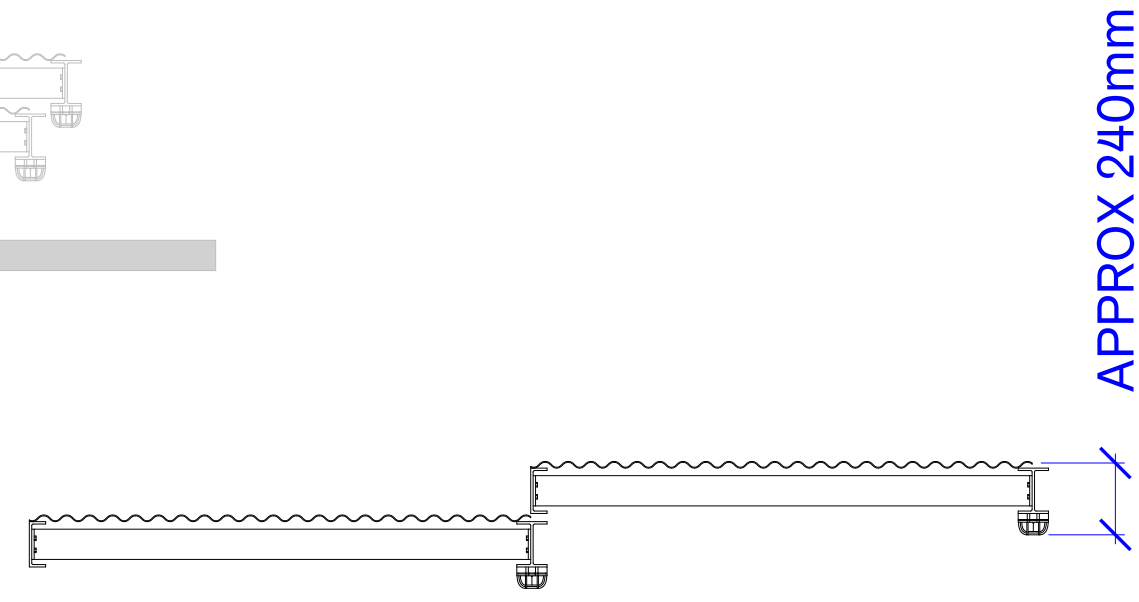


# BREWERY SLIDERS

POSITION RELATIVE TO LEGS

FOR COSTING ONLY. SUBJECT TO CHANGE

STRUCTURE AND TRACK MECHANISM TBD



3D MODEL (NOT FOR SCENIC REF)



3D MODEL (NOT FOR SCENIC REF)

BREWERY SLIDERS TRACK IN SECTIONS TO FIT IN WINGS.  
MECHANISM TBD -- THIN PROFILE REQUIRED.  
SCENIC I-BEAMS AND CORRUGATED METAL.

PLEASE NOTE: NO LIABILITY IS ACCEPTED FOR ANY ACTION RESULTING FROM THIS DRAWING, HOWEVER CAUSED. THIS DRAWING REPRESENTS VISUAL CONCEPTS AND CONSTRUCTION SUGGESTIONS ONLY. THE DESIGNER/DRAUGHTSPERSON IS UNQUALIFIED TO DETERMINE THE STRUCTURAL APPROPRIATENESS OF THIS DESIGN AND WILL NOT BE RESPONSIBLE FOR IMPROPER ENGINEERING, CONSTRUCTION, RIGGING, HANDLING OR USE OF THIS SCENERY. ALL MATERIALS AND CONSTRUCTION METHODS MUST COMPLY WITH LOCAL FIRE AND SAFETY REGULATIONS.

ALL DIMENSIONS IN MM UNLESS STATED OTHERWISE. DO NOT SCALE FROM THIS DRAWING. VERIFY ALL DIMENSIONS ON SITE.

REPRODUCTION IN PART OR WHOLE, WITHOUT PERMISSION, IS PROHIBITED.

PROJECT: THE UNLIKELY PILGRIMAGE OF HAROLD FRY	WING: THEATRE ROYAL HAYMARKET	STATUS: PROVISIONAL
PRODUCED BY: CHRIS HARPER PRODUCTIONS		DRAWING NO.: 003
DIRECTOR: KATY RUDD	DESIGNER: SAMUEL WYER	DATE DRAWN: 29.10.25
LIGHTING DESIGNER: PAULE CONSTABLE	VIDEO DESIGNER: ASH J WOODWARD	DATE DELIVERED: 30.10.25
CHOREOGRAPHER: TOM JACKSON GREAVES	ASSOCIATE DESIGNER: JOSEPH BISAT MARSHALL	REVISION: 00
ASSOCIATE LIGHTING DESIGNER: TERESA NAGEL	PRODUCTION MANAGER: AMMONITE STUDIOS	SCALE: 1:25 @ A1